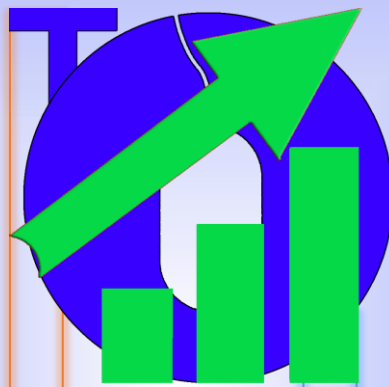


Torpedo Traffic Generator Ultimate

V8.0-8.5

(User Guide)



Copyright © 2022 Gem's Software, All rights Reserved.

Website: <https://torpedotraffic.com/>



Table of Contents

.....	1
Introduction	3
WAT or Torpedo?	3
For what & Why Torpedo?	3
How Torpedo Works?	3
How Torpedo helps in Offsite SEO?	3
Top Features of Torpedo	4
Installation & Activation	5
Usage Instructions	7
1. SEO General Traffic	7
2. Geo Location	9
3. Platform.....	12
4. Scheduler.....	13
5. Settings.....	14
6. Run.....	16
7. SEO Campaign Traffic.....	17
8. Menu Bar.....	18
How to Start Using Torpedo?	19
Frequently Asked Questions (FAQ)	20
Reference Links	22



Introduction

The world is changing from traditional marketing methods to digital marketing method. People are looking over the web to get their desired products or information. If you throw a stone over the internet, you will find a lot of same and similar information from multiple resources, we say web pages. People always go for the resources they get quickly with minimum searching. They would be the web pages listed in the first few pages of search results. If a product or website is not known or less known to search engines, they will not be visible in the front of Search Engine Results Pages (SERPS).

WAT or Torpedo?

Torpedo Traffic Generator is formerly known as WAT (Website Auto Traffic Generator). We rebranded and renamed WAT to Torpedo Traffic. Starting from version 8.0, WAT will be called as Torpedo Traffic Generator or just Torpedo.

For what & Why Torpedo?

Torpedo Traffic Generator is a software tool designed to bring your web site popular over the internet. The tool will help you to increase your website's or blog's visibility in SERPs within short duration. Torpedo is useful to anyone who is having a website or blog and want to get traffic from globe to make their product or service popular through their site. Torpedo is an installable executable program designed to work under Windows platform.

How Torpedo Works?

A web site is said to be popular over the internet, it should have large number of visitors and it need to appear SERPs on user searching. To appear pages on SERPs, they should be optimized on search engines. The Search Engine Optimization (SEO) basically depends on 2 factors - Onsite and Offsite SEO. Torpedo works based on Offsite SEO by generating traffic to your website.

How Torpedo helps in Offsite SEO?

To understand how Torpedo performs offsite SEO, we need to explore search engine techniques or lookups that search engines used to bring up a web page in the first of SERPs for a query. Obviously, search engines consider the following properties of a website: -

1. Web page views count
2. Multiple sessions/users' visits
3. Session on a visited website (Visits)
4. Browsing mode – acts like browsing through a website
5. Number of locations from which a website is visited
6. Types of web browsers they use
7. Types of devices from which web page is opened
8. The keywords used to reach your web page (queries)
9. Affiliate clicks and campaigns
10. Etc.



Torpedo looks into these factors to bring your website into topmost of SERPs. Customizing some of these options in Torpedo can change the visibility of your page in SERPs in a different way too. For example, if you are customizing Torpedo to choose traffic location from US, your website will get more visibility in SERPS at US than from other countries.

Top Features of Torpedo

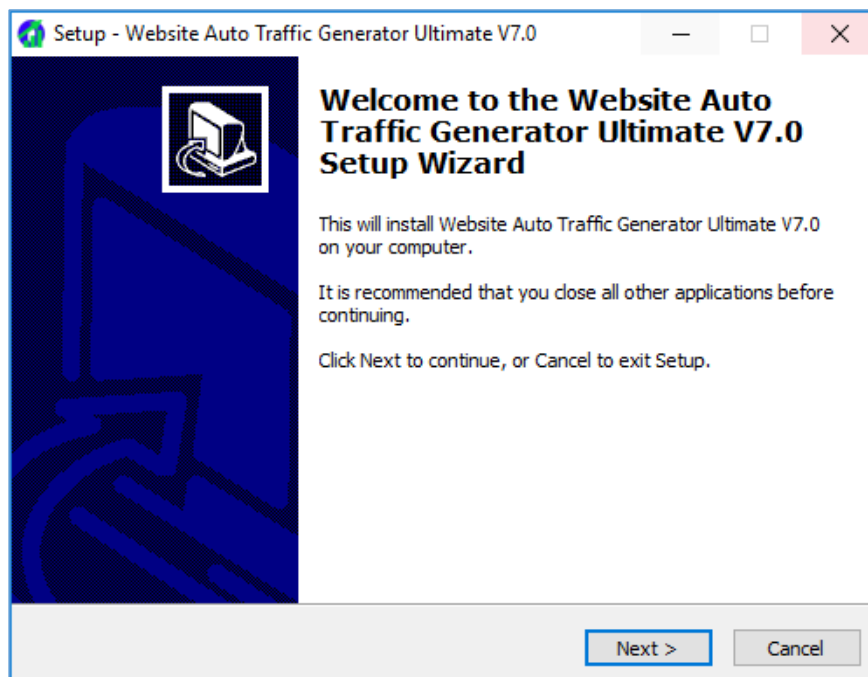
You may visit latest feature information from <https://torpedotraffic.com/compare>. Some of the highlighted features are provided below:

- Auto selection modes for optimising sessions, page views and bounce rates
- Browsing mode – acts like browsing through a website
- Organic traffic from multiple search engines (Google, Bing, Yandex, Ask, AOL etc.) and social networking sites Facebook, Twitter, Google+, Instagram, LinkedIn, Reddit etc.)
- Keywords based traffic
- Page visits and session customisation
- No traffic limits. You can make any amount of traffic with Torpedo
- Convenient Geolocation support. You can add proxies from required geo location
- Traffic from multiple device and OSs (Windows, Linux, Android, Mac, iPhone etc.)
- Traffic from multiple web browsers (IE, Edge, Google Chrome, Firefox, Opera, Maxthon etc)
- Campaign traffic creation
- Advanced switching of platform, web browsers, geo location etc.
- Advanced Scheduler – you can schedule to start and stop traffic from Torpedo
- Auto refreshing and fetching of proxy IPs. You can run Torpedo days without interval with updated proxies, so that no traffic will waste
- Dual traffic engines – provides you smooth traffic
- Readable live traffic logs. You can understand how traffic goes.
- Auto exit Torpedo – you can let Torpedo quit at a specific time
- Addon tool Link fetcher helps you to grab all links in a website
- Auto check and clear connection issues
- 24/7 tech support – email and remote (remote support is provided based on request via email).

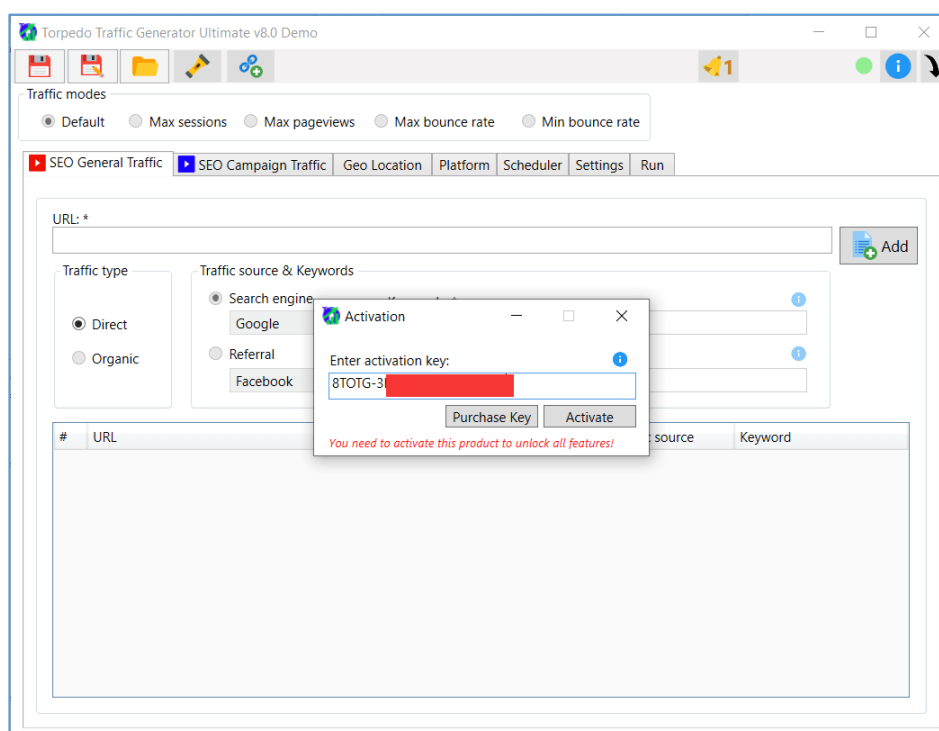


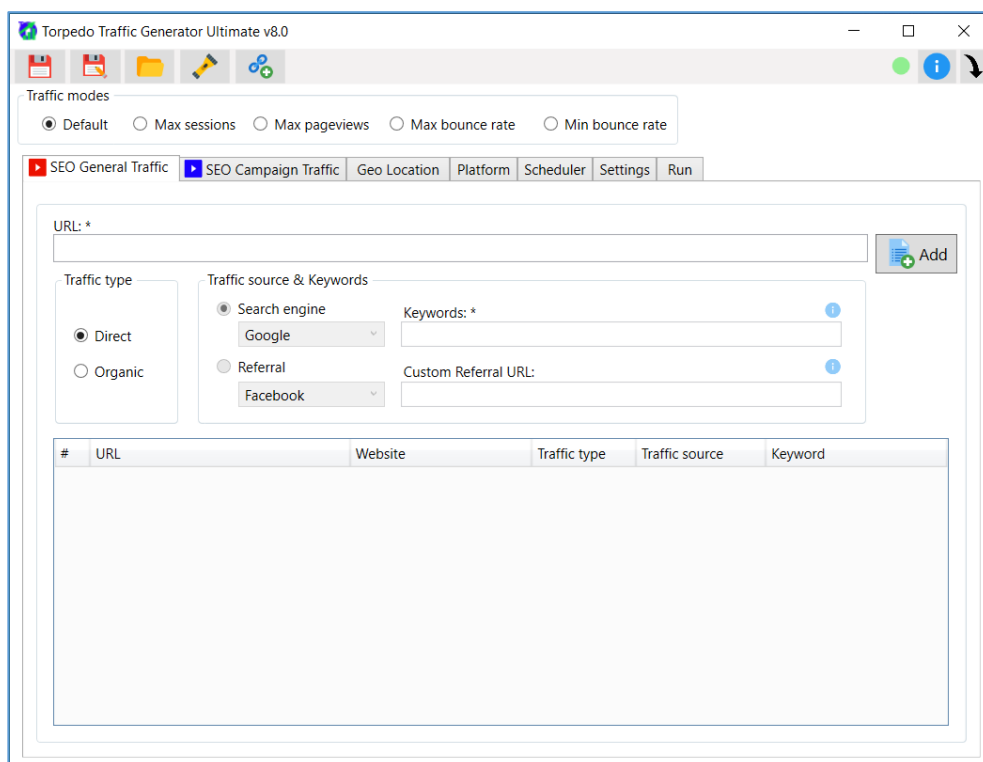
Installation & Activation

1. Download Torpedo from <https://torpedotraffic.com/downloads> and run the installer to start installation as usual.



2. After installation, open Torpedo (you can find the shortcut link at the desktop). It will prompt you to enter the activation key. Enter the activation exactly as key you received in the purchase mail and activate. After activation you need to reopen the application to make the activation effect.





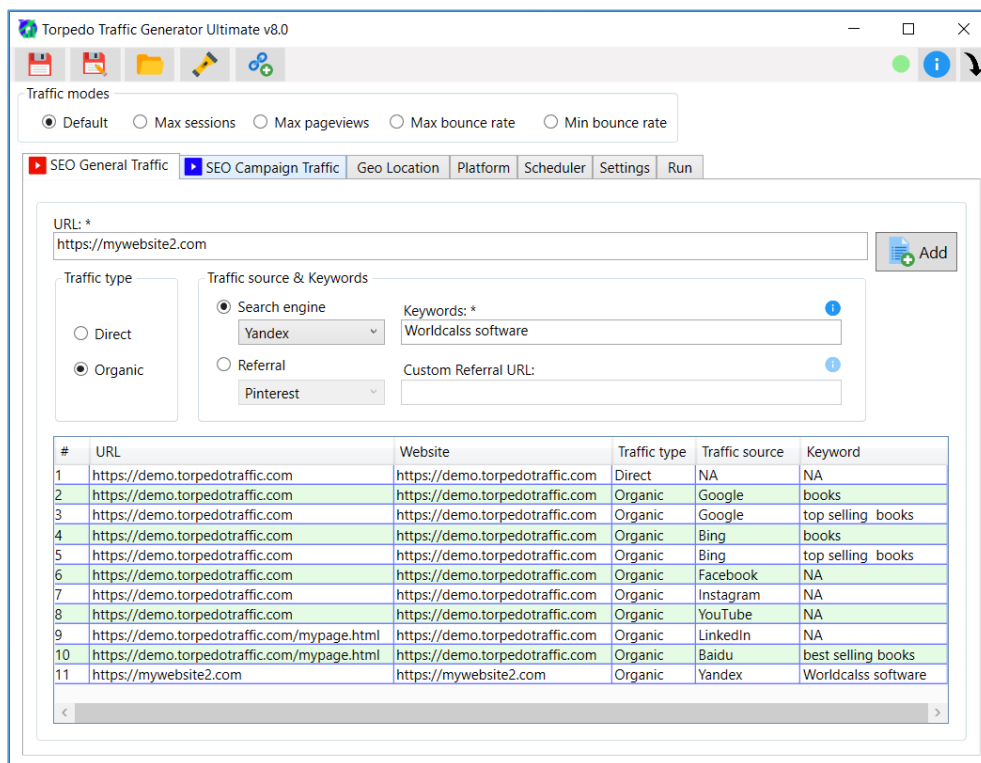
The above screenshot shows the reopened Torpedo window after successful activation.



Usage Instructions

1. SEO General Traffic

You can add web pages one by one to the list. Note that the traffic is affected only to the URLs you added to the list. So, if you need traffic to whole website pages, you need to add all page URLs. See the section about [Link Fetcher](#), which will help you to fetch web pages automatically from your website.



Traffic modes:

These modes are helpful for quick managing your current website traffic properties. According to your requirement, you can always tune these modes by changing values from the Settings tab.

- Default – this is the default Torpedo configuration. This configuration is suitable for newly created sites
- Max sessions – this will help to improve session duration on a website. This configuration is helpful for websites having low average session duration
- Max pageviews – this configuration focus on increasing page views
- Max bounce rate – this configuration is suitable for website having very low bounce rate so that increasing bounce rate automatically converts to the hike of traffic counts within short period of time
- Min Bounce rate – suitable for sites having high bounce rate to decrease it

Traffic Type:

The traffic type defines the kind of traffic you are going to deliver to your websites.

- Direct – the traffic generated to the page, which is same as traffic generated as a result of opening the page by entering URL at the browser's address bar.
- Organic – the traffic generated to the page, which is same as traffic generated as a result of the search query (if Search Engine is selected) with the keywords specified or referral from a

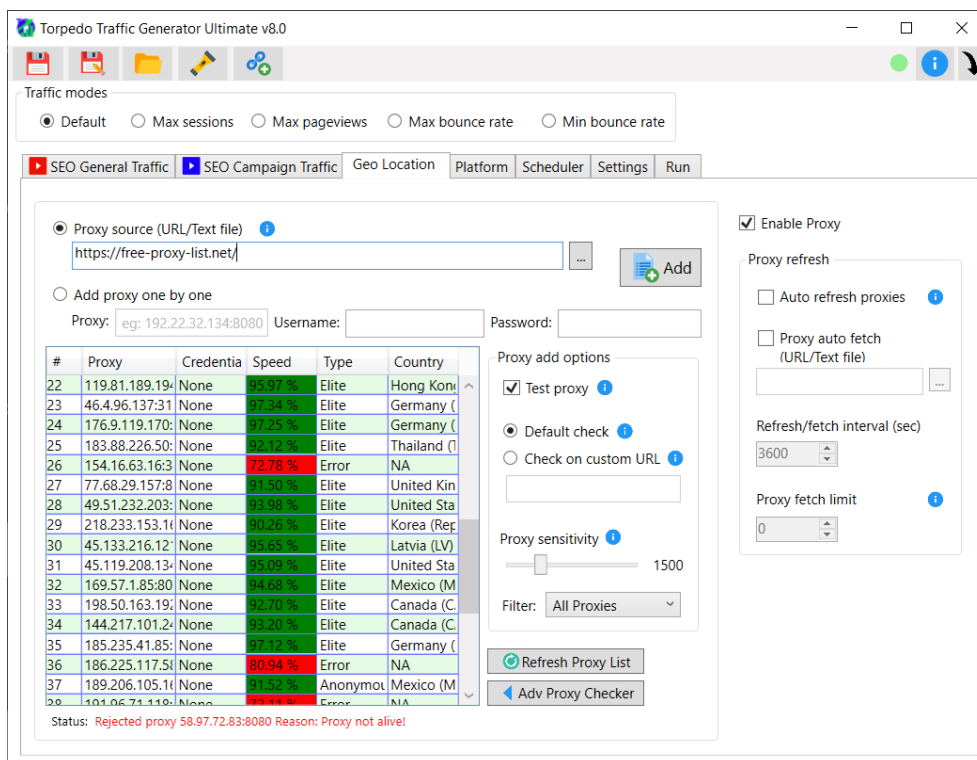


social networking site (if Referral is selected). It is also possible to add custom website as a referral source.



2. Geo Location

This tab is to entirely for specifying traffic location (geo location). If you don't want to get traffic from a different location and if you are comfortable with making traffic from your own location (IP), you can skip this page. **Torpedo V8.0** supports all kinds of proxies (HTTP, HTTPS, SOCKS4 and SOCKS5) with and without authentication. **Torpedo v8.1** onward should not be supporting of non-SSL (ie. HTTP) proxies. All website are supposed to operate in HTTPS version and hence HTTP proxies are no longer required.

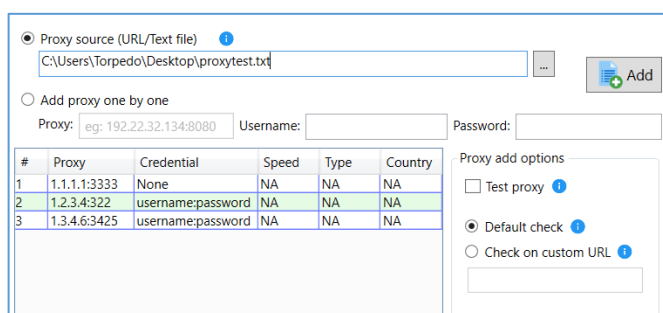


- Proxy source (URL/Text file) – you can specify a website where proxy IPs are listed. On selecting this option, Torpedo fetches proxy from the given site and add to the list automatically. Instead, you can also import proxy IPs from a text file you saved. Please note that you may not be able to import proxy from all websites. In that case, you may manually add proxies. If you are importing proxy IPs from text file, the following formats of proxy is supported:

```

1.1.1.1:3333
1.2.3.4:322:username:password
username:password@1.3.4.6:3425
  
```

->



Torpedo v8.2 onwards will support proxy containing domain names. Eg: abcd.com:33333



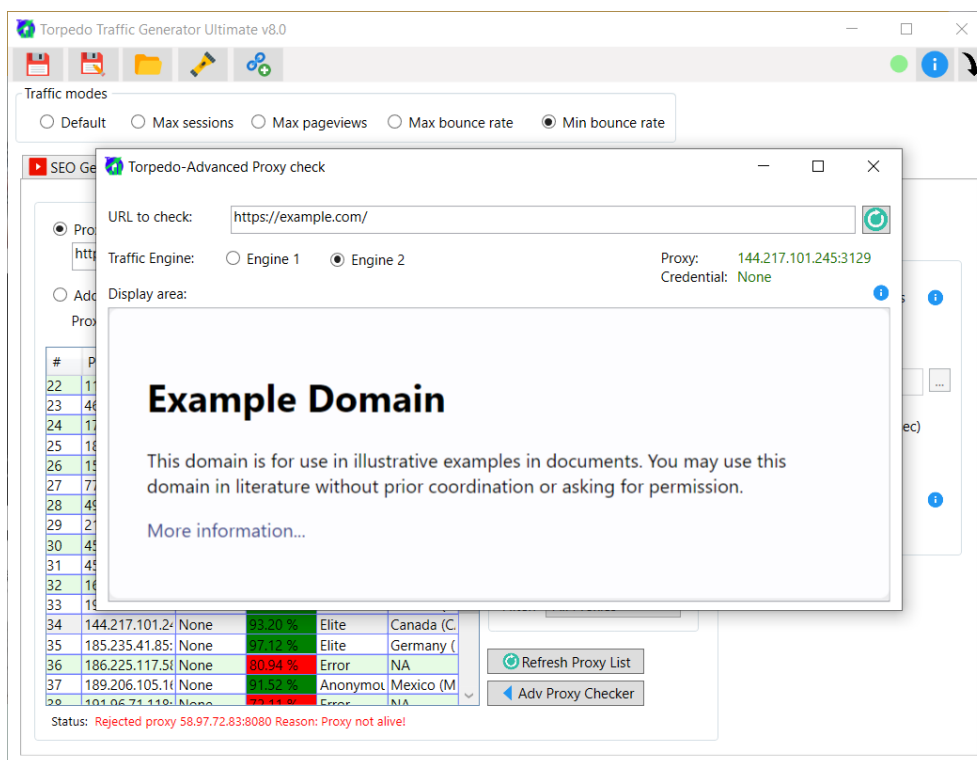
- Add proxy one by one – specifies the proxy IP in the form “123.123.123.123:123”. You will get a list of proxy IPs based on different locations from the internet for free.
- Test proxy – on enabling this checkbox, all proxy IPs are checked for its quality prior adding to the list. This is a basic check to filter out invalid/dead proxies. **Torpedo v8.1** onwards filter out non-SSL (ie HTTP) proxies. Since all websites are using HTTPS now, excluding HTTP proxies helps you to find valid working proxies.

It is recommended to keep the checkbox ticked unless you are sure that the proxy IP you are adding is a working one. You may choose option “Check on custom URL” to check proxy directly on your website. This will ensure the proxy actually working for your website. If you choose this option, note that the check done by each proxy will be generating a traffic hit to your website. This hit does not offer traffic quality and hence we recommend not to use any common pages in your website. You may create a test page in your website with some random contents for this check.

You can see different colours **Green**, **Red** and **Gray** coloured fields with percentage under Speed column. They indicate the speed of the proxy you added at that time. You need to keep “test proxy” checkbox ticked to see this. The colour is given as **0% < Gray < 50% <= Red < 85% <= Green <=100%**. The dead or non-responding proxy IPs are rejected automatically.

- Proxy sensitivity – it defines the speed of the proxy. Lower the value, higher will be the speed. Hence slow proxies are rejected if the proxy sensitivity is low. You are recommended to make the sensitivity high if your internet speed is slow.
- Type of proxies - you can see the type of proxies adding to the table are classified as Transparent, Anonymous & Elite. This classification is based on the anonymity level of proxies.
 - Transparent - The web server can know you are using a proxy and it can also know your real IP. Transparent proxy is less recommended.
 - Anonymous - Anonymous proxy server is detectable revealing that you are using a proxy server, but your IP is not exposed. Anonymous proxy is more recommended than transparent proxies.
 - Elite – these are highly Anonymous Proxy. The web server can't detect whether you are using a proxy. Elite proxies are highly recommended.
- Filter – This filter option allows you to filter proxies you are adding based on its anonymity level
- Refresh Proxy List – this option allows you to refresh the table based on the ‘proxy add options’ you set.
- Adv Proxy Checker - There would be situations when you don't receive traffic from a proxy you added even though it is alive. These are some improperly configured proxies or should have its own filtering to deny traffic to your website. In such cases, you can directly check whether the proxy actually loads your website or not. Select proxy and click on “Adv Proxy checker” button, add your website URL and see if the proxy can load your website. If you find your website is loading on a proxy as shown in below screenshot, the proxy you are added is definitely working and you will get traffic.

The below screenshot shows the website <https://example.com> is loading on a SSL supported proxy “144.217.101.245:3129”, which means the proxy added is actually working.



- Proxy refresh – This option provided at the right side will help you to automatically update proxy from the given source. An easy way you can adopt is writing your proxy into a text file regularly and provide its path. Based on the time interval you provided Torpedo proxy list will be updating from this text file.



3. Platform

Here we create different platforms for the traffic source. You can differentiate platform based on Web Browser, Operating System, Device, Web Browser version, OS version and screen resolution. Torpedo takes the platform you created as the traffic originating platform and note that you need to create atleast one platform before you start running.

The screenshot shows the 'Platform' tab in the Torpedo Traffic Generator Ultimate v8.0 interface. It includes configuration options for browser, OS, and screen resolution, and a table of created platforms.

Traffic modes: ☒ Default ☐ Max sessions ☐ Max pageviews ☐ Max bounce rate ☐ Min bounce rate

SEO General Traffic **SEO Campaign Traffic** **Geo Location** **Platform** **Scheduler** **Settings** **Run**

Select browser:

- SeaMonkey
- Yandex Browser
- Vivaldi
- Brave
- Epic
- Comodo Dragon
- Comodo IceDragon

OS/Device:

Windows

Browser version: 64.0.4.15

OS Version: Windows 10

Screen Resolution: 2280x1080

Add

#	Web Browser	Browser version	OS/Device	OS Version	Screen Resc
1	Internet Explorer	11.0.190	Windows	Windows 10	Default
2	Edge	90.0.818.62	Android Samsung Phone	10.0	376x240
3	Google Chrome	92.0	Mac OS	11.3.1	720x350
4	Google Chrome	87.0.4280	iPhone	14.5.1	1600x1050
5	Mozilla Firefox	78.11	Linux	NA	1920x1280
6	Mozilla Firefox	71.0	Windows Phone	10.0	1920x1280
7	Safari/Mobile Safari	14.1	Windows	Windows 10	1024x640
8	Comodo Dragon	89.0.4389.128	Windows	Windows 8.1	2160x1440
9	Brave	1.24.85	Android	11	1920x1280
10	Vivaldi	3.8.2259.42	Mac OS	11.3	2160x1440
11	Yandex Browser	21.5.0	iPhone	14.5.1	3840x2160
12	Comodo IceDragon	64.0.4.15	Windows	Windows 10	2280x1080



4. Scheduler

The scheduler allows you to schedule Torpedo when to start. You may add one or more schedules. Based on the time you schedule, there could be situations where the schedule A may not finish before starting next schedule B. In such cases, Torpedo will automatically stop previously running schedule (i.e., schedule A) and start the new one (i.e., B).

Please note that the Torpedo will not start scheduled traffic automatically if you close the application. You may either minimize Torpedo or use “Minimize to system tray” button provided at right-top to minimize Torpedo into system tray.

#	Name	Occurrence	Start Time
1	My daily traffic	Daily	1/6/2021 6:52:40 pm
2	My peak time task	Once	23/6/2021 6:52:40 pm
3	A weekend go	Weekly	5/6/2021 8:00:00 pm



5. Settings

Here you will find a list of options to customize the characteristics of traffic.

- You can set “Session duration” a constant value or a variable value as shown in above picture. If you are selecting variable time duration, the session duration is recalculated each time when a traffic is generated and which would be a value between Min and Max fields. Session duration is also called as traffic interval. Note that you should set Count value from “Special mode” section atleast 2 for making a session. Because a session duration is the time interval between first and last requests. If you set the Count value to 1, then the session duration will only act as the time interval between each visit.
- The “Page traffic” can be set based on Total traffic or Average traffic per page. If you are specifying Total traffic field, then it is the total traffic for whole pages you are getting at that run. If you are selecting average traffic option, then total traffic would be Average traffic value x Total pages in the list. This option can provide equal amount of traffic to all web pages in the list. But if the page selection order is random (Randomly select each time), the traffic reception in the pages will vary.
- The option “Each page in order” will select web pages added in the list in order for delivering traffic
- In the “Platform switching” section, you can select any of three options. You may select single platform if you want to generate traffic from single platform only. You need to click refresh button each time to bring all platforms in the list if you have modified the platform table. The second option will select a random platform for each traffic generation. If you select the third variable time option, next platform would be chosen in order after a random time period and the random time period would be any value between Min and Max values.



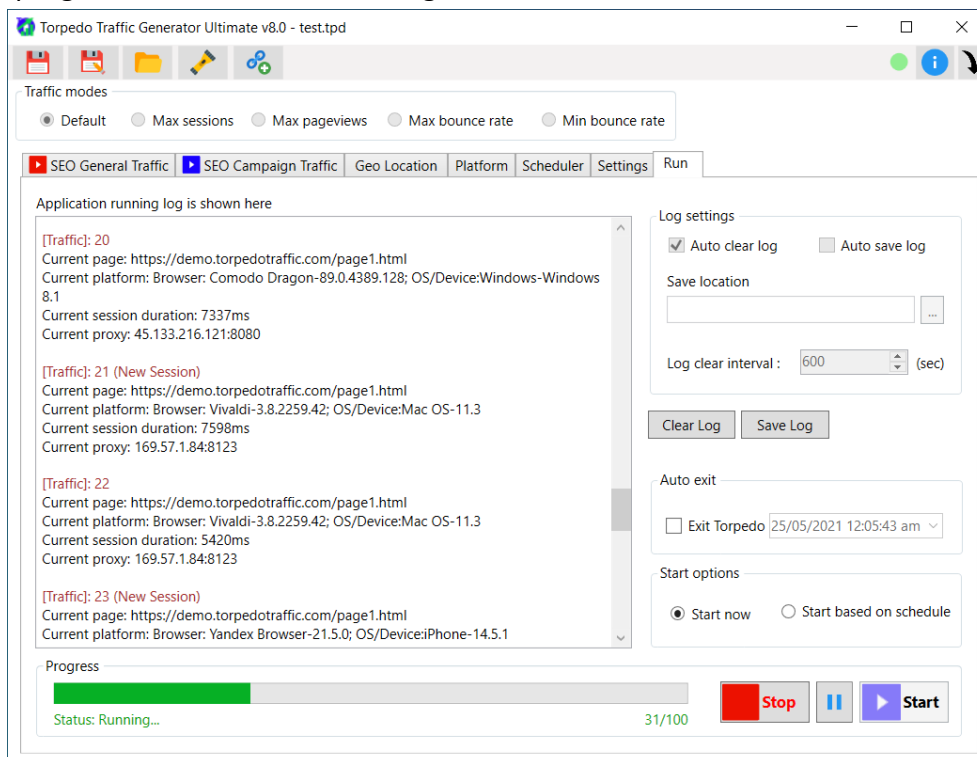
- The “Traffic engine” section allows you to select the engine to create traffic. The native “Trident” and “Chromium” engine technologies are available and you can select any for smooth delivery of traffic. The 2nd traffic engine Chromium is recommended as we have seen it supports most websites, especially the websites designed using latest technologies.
- The proxy switching section defines how proxy IPs (geo location) to be selected during traffic generation. If you select “Time based (ms)” option, the next proxy is selected after a time period, where the time period is a random value chosen between Min and Max and it is calculated each time a proxy is used. If you use “Use random proxy”, then random proxy is selected instead of selecting orderly in proxy switching. Also note that **ms** indicates milliseconds value!
- **Special mode** – this mode allows you to change the ‘sense’ of traffic. In repetition mode, the traffic behaves as user frequently visiting same page one or more times depending on the “Count” value specified. In surfing mode, the traffic will be like users browsing through different pages in a website and then switching to another website.

Note: If surfing mode enabled, you should add the pages in the same website adjacently and then the pages from another website. The browsing mode will browse through each page under same session. The session changes to new session during browsing when “Count” value exceeds or the next URL is from a new website. You may ignore this note if you are not adding pages from more than one website.



6. Run

Open “Run” tab. This page shows the running status of Torpedo. You can find two buttons in **Red** as well as in **Blue** colour. The red “Start” button is for generating normal traffic (SEO General Traffic). The blue “Start” button is for campaign traffic (SEO Campaign Traffic) and it is explained detail in the upcoming session. Here we have clicked the Red button and we can see the running status in the progress bar as well as in the log area.



- Auto exit – This option allows you to exit/close Torpedo at specified time.
- The “Scheduler” helps you to schedule the Torpedo run. The “Start now” option starts the program immediately. The “Start based on schedule” option will help you to start traffic based on the schedule you defined in “Scheduler” tab. Note that, if Torpedo has been scheduled, you can either minimize Torpedo (suing either minimize button or system tray button provided at top-right) or stay it as open. Closing the window will exit the Torpedo completely!
- The “Clear log every hour” checkbox helps to clear the log area every hour automatically.



7. SEO Campaign Traffic

This tab will help you to create campaigns and generate campaign traffic. Note that you can run only “SEO General Traffic” or “SEO Campaign Traffic” at a time. You can use the corresponding **Blue** button under “Run” for running Campaign Traffic. These campaigns are specially created for Google Analytics tracking. So, you can view the campaign details in Google Analytics.

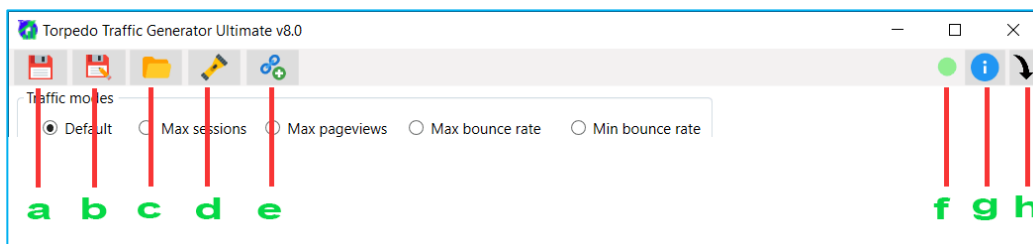
If you do campaign traffic like sending emails or posting an ad on a website, you may use this function. Otherwise, you only need to use “SEO General Traffic”.

The screenshot shows the Torpedo Traffic Generator Ultimate v8.0 interface. The 'SEO Campaign Traffic' tab is selected. The 'Traffic modes' section has 'Default' selected. The 'Run' button is highlighted in blue. The 'URL' field contains 'https://example.com/'. The 'Campaign Name' field contains 'My 2nd campaign'. The 'Campaign Source' field contains 'websearch'. The 'Campaign Medium' field contains 'banner'. The 'Campaign Content' field contains 'ad_type_2'. The 'Campaign Term' field contains 'Gaming devices'. Below these fields is a table with 8 columns: #, URL, Website, Campaign Name, Campaign Medium, Campaign Source, Campaign Content, and Campaign Term. The table contains two rows of data.

#	URL	Website	Campaign Name	Campaign Medium	Campaign Source	Campaign Content	Campaign Term
1	https://demo.torpedot	https://demo.to	My 1st campaign	email	newsletter	ad_type_1	branded laptops
2	https://example.com/	https://example	My 2nd campaign	banner	websearch	ad_type_2	Gaming devices

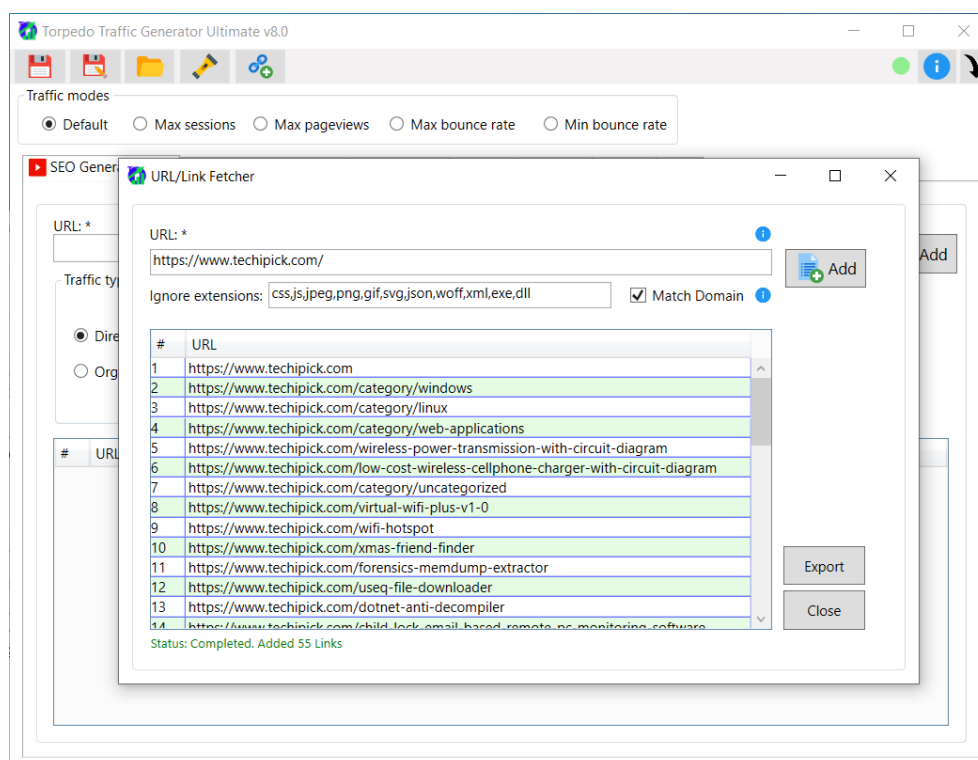


8. Menu Bar



- a) Save button (for saving configuration)
- b) Save As button (for saving configuration)
- c) Open button (for opening configuration)
- d) Troubleshoot button (for checking general connection issues)
- e) URL/Link Fetcher

This is an addon tool which will help you to fetch all links in your web page. Suppose your web page contains multiple links, the URL Fetcher will fetch them automatically and you can add them to Torpedo instead of adding all URLs one by one manually. You should select the URLs from the Fetcher table and copy that to insert in Torpedo table. Right click on the Fetcher table, you can also export all URLs in a text file for later use.



- f) Internet Status (shows whether Internet is accessible or not)
- g) Application Info button
- h) Minimize to system tray button



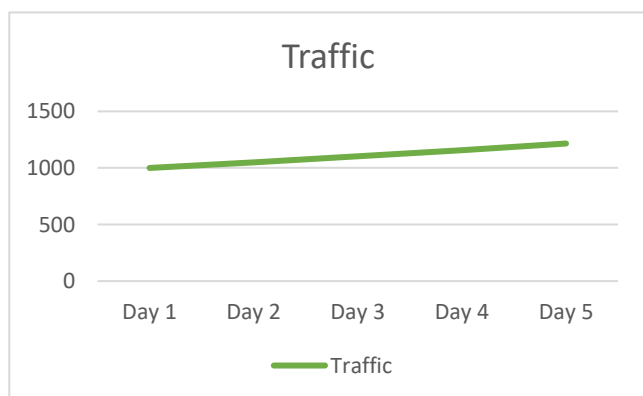
How to Start Using Torpedo?

Each and every website is different based on the content as well as the current traffic they are receiving. Hence the settings and switching options of Torpedo should be taken based on your current website traffic statistics. Your ultimate aim is to get traffic without using Torpedo at a later point of time or this is torpedo can do for you. I.e., you don't need Torpedo to run always as Torpedo could boost traffic and increase visibility in SERPs after a few months of continuous usage. At later stages, Torpedo will help you to boost traffic whenever your traffic goes down.

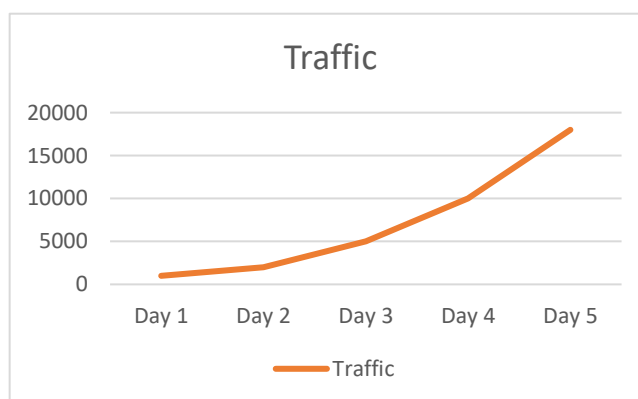
You should configure Torpedo such that your site will receive around 5% increase of total traffic you received yesterday. That is, you are making 5% additional traffic using Torpedo. Suppose you have 1000 traffic yesterday; you can run Torpedo to make 50 traffic so that you will get 1050 traffic today. Tomorrow you can use Torpedo to make around $50 + 5\% \text{ of } 1050 = 50 + 53 = 103$ traffic so that total traffic would be 1103. Please note that the additional traffic number are roughly selected, so you only need to select values such that it will make some additional amount of traffic each day. Sometimes you may receive same traffic or comparatively less traffic than previous day. It is quite normal, but try to avoid traffic going down than previous day. Please note that above traffic count and incremental ratio are not fixed and you are free to choose those values with slight difference.

We were talking about day-by-day traffic progress; you can also select traffic progress routine twice a day or weekly. In this case you can calculate average traffic in the past days or past week to get few amounts of extra traffic in the next days or weeks respectively.

We are not recommending Torpedo configuration for a high peak in the traffic statistics. A high peak in the traffic is assumed to be fake traffic or made by bots. This does not have no relationship with traffic quality. Also Search Engines requires time to get your site traffic indexed and to calculate your site rank. Hence slow traffic progress can only provide expected result. You can see your website is coming to the front of search results within few days of Torpedo usage if you flow the instructions mentioned above.



Good use of Torpedo as the traffic is progressing slowly



Torpedo usage is not recommended in this way as the traffic generation comparatively very high day by day



Frequently Asked Questions (FAQ)

Very few questions are addressed below. For all queries and up-to-date information, please check the FAQ page at <https://torpedotraffic.com/faq>.

1. I installed Torpedo, but it crashes while opening. Why?

Torpedo requires Microsoft .NET Framework and Microsoft Visual C++ Redistributable Package. If they are not already installed in your system (as a part of Windows update), this happens. You can download and install them from download page corresponding to your Operating System. Visit <https://torpedotraffic.com/downloads>

2. Can I install Torpedo on MacBook or Linux?

At present, Torpedo only supports Windows Operating System starting from windows 7 SP1. If you don't have a Windows platform, you can make it using any of the options listed below:

a) Install as a Virtual Machine

- For Mac you can try Parallel Desktop - <https://www.imore.com/how-run-windows-10-your-mac-using-parallels-desktop-13>
- For Linux you can try VMWare Workstation Player - <https://www.vmware.com/products/workstation-player/workstation-player-evaluation.html>

b) Purchase a cloud/VPS machine providing remote desktop access

3. On how many computers I can Install Torpedo after purchase?

The license key you received after purchase is a single PC license. However, we recognize that users may need to install Torpedo on more than one computer. Due to this situation, we can enable Torpedo to be activated on 2 PCs without any additional cost or purchasing additional license. Please contact us at <https://torpedotraffic.com/contact> to enable activation on one more computer using the same license key.

4. I need to change Torpedo to a new PC; how do I do?

You can move Torpedo from another PC at any time by clearing license associated with your current PC. Enter your license key and follow the instructions here <https://torpedotraffic.com/license-reset> to reset your license. After license reset, you will be able to activate Torpedo on a new computer using the same license key your purchased.

5. Is there any limit in traffic generation?

No. There is no limit is traffic that can be generated by Torpedo. It is always recommended to follow [“How to Start Using Torpedo”](#) section for providing traffic count.

6. Is there any moneyback guarantee?

Yes, we have money back guarantee if the product features are not working as mentioned. Please visit <https://torpedotraffic.com/refund-policy> to know more.

7. Can I get a trial version of Torpedo?

At present Torpedo is available as Demo version (i.e., Free version) and Full version (ie. Paid version). You can download demo version from <https://torpedotraffic.com/downloads> and use with limited features. Since we have money back guarantee, you can purchase full version and try.

8. How do I get proxies?



Proxy IPs are easily available in internet for free. Just query for 'free proxy IP' you will get a lot of websites issuing free proxy IPs. Please note that we are not issuing proxies are not recommending any proxy service provider. We expect customers to get proxy from online or find good proxy provider websites from user's feedbacks.

9. What are the criteria used by Torpedo to select/reject proxies when adding to the table?

If you have checked "Test proxy" checkbox, some conditions need to be meet. The proxies adding to the table are rejected if the following conditions are not satisfied:

- Proxy should be supporting SSL/TLS .
- Should be capable of loading web pages. Ie. the proxies should be able to load a website.
- Proxy sensitivity and filter is applied according to what you select in Torpedo.

10. I cannot pay via PayPal or methods provided in the website. What can I do?

Please check the available payment options provided at <https://torpedotraffic.com/purchase>. If you want to pay in any other forms, please contact us here <https://torpedotraffic.com/contact>.

Please visit FAQ section in the [website](#) for further details



Reference Links

- Official website: <https://torpedotraffic.com/>
 - Secrets of Website Traffic Generators: How They Help You? <https://www.techipick.com/secrets-of-website-traffic-generators-how-they-help-you>
 - Custom campaigns - <https://support.google.com/analytics/answer/1033863?hl=en>
-